

## Product information

---



### Carcase finish

The **carcase** and **removable shelves** are made from **19 mm thick** three-layer quality particle board (E1), manufactured with a high-quality direct laminate coating on both sides according to eco-friendly principles and in line with the guidelines of the German Furniture Association. The coating is highly resistant and easy care. Special joining technology affords the carcase high rigidity.

The back panel thickness is 0.5 cm. Carcases inside and outside in same colour and shelves have a back panel thickness of 1.2 cm.

### Carcase front edges

The carcase front edge is provided with a top quality thick edge and as a result is highly impact resistant.

With regard to visible sides in lacquer, high gloss or veneer this carcase front edge is supplied in the colour of the visible side.

### Visible carcase sides

Visible outer sides in repro (colour group R) are supplied free of charge.

This must be clearly indicated on the order and marked on the drawing.

Visible sides in the colour groups Monolacquer (RL), lacquer (L), high gloss (H) or veneer (F) are supplied at extra charge.

For finish of visible side, see colour matrix on page 208/209

Carcase inside and outside in same colour at extra charge available.



### Removable shelves

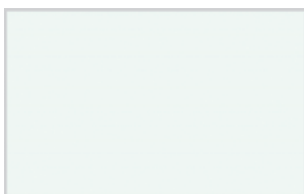
Our 19 mm thick removable shelves are height adjustable and are secured with **recessed locking metal shelf supports**.

### Carcase versions:

#### Carcase finish 176 snow

Edge finish choice of :

- Snow 176
- Aluminium 3D 925
- Shelf supports: light grey



Carcase 176 Snow

#### Carcase finish 174 linea (slight linen texture)

Finish of edge:

- fix 174 linea
- Shelf supports: dark grey



Carcase 174 Linea

## Product information

---

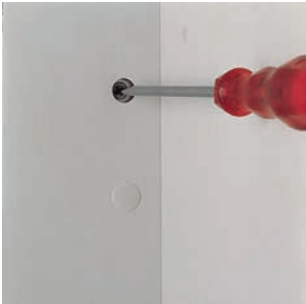


### Hinges

#### Metal clip hinges incl. soft<motion

These metal hinges are extremely durable and sturdy (extended fatigue test at LGA Nürnberg). The 107° opening angle (or 150° in some specific units) allows easy access to the unit interior. The locking mechanism of the articulated arm provides two-fold safety and security and thus satisfies the highest quality standards. Clip hinges greatly facilitate installation thanks to the tool-less front mounting, trouble-free height, depth and lateral adjustment plus convenient, quick door change.

**soft<motion** closes the doors gently and quietly - the optimum closing action.



### Hanging systems for wall units

The high-quality hanging system offers an array of benefits in every respect.

The **steel construction** ensures optimum strength and security. It includes an easy-to-use, installer-friendly adjustment function. The system impresses also in terms of appearance: the hanging brackets are not visible inside the unit but are located behind the back panel.



### Plinth system

Base units and tall units are equipped with a height-adjustable and installation-friendly plinth system. Every individual unit can be precisely adjusted on site. The plinth panel comes with a sealing strip at the point of contact with the floor.

A plinth height ranging from 7 to 23 cm is available in full cm increments.

Each plinth foot can be adjusted from the inside (upwards + 2 cm, downwards - 1 cm).

Plinth panels in repro (colour group R) are supplied free of charge.

Plinth panels in the colour groups lacquer (L), high gloss (H), stainless steel (E) or veneer (F) are supplied at extra cost.

Plinth: 1.2 cm thick

## Product information

---



(III. LEGRABOX silk white)

### LEGRABOX (interior equipment 207 / 607)

Our drawer and pull-out system stands out on account of its sleek, linear appearance. The minimalistic design of the drawer box featuring 12.8 mm ultra-slim drawer sides in **silk white** or **orion grey** underscores the elegant aesthetics of the LEGRABOX.

A special cabinet profile ensures a high quality of motion. The runner system offers many outstanding features, such as the synchronized smooth running action for an even higher quality of motion, alongside a dynamic load-bearing capacity of 40 kg for drawers and 70 kg for pull-outs.

Our drawers and pull-outs across all the kitchen ranges include integrated automatic closing and a pull-out safety stop.

The gentle braking action of **soft<motion** ensures automatic soft and silent closing of drawers and pull-outs. The standard full extension system offers optimum access in daily use. Maximum volume in the extension area is achieved thanks to the extra-high steel back panel in silk white.

**Note:** For technical reasons some items are not available with a high back panel or with soft<motion.



(III. LEGRABOX orion grey)

### Finishes:

**LEGRABOX silk white = interior equipment 207**

**LEGRABOX orion grey = Interior fittings 607**



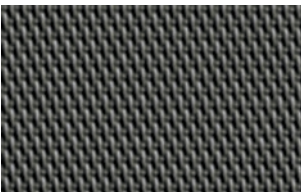
(III. non-slip mat **white TAM** ...)

### Non-slip mats

All drawers and pull-outs as well as larger units and carousel units are supplied **as standard** with a non-slip mat in the colour of the pull-out's interior fittings.

### Possible combination

Ordering example: LEGRABOX in silk white with non-slip mat in grey - please order the non-slip mat in addition as a separate item.



(III. non-slip mat **grey TAG** ...)

### Separate item

Non-slip mat white = **TAM...**

Non-slip mat grey = **TAG...**

## Product information

### Load capacities

---

#### Drawers

Carcase depth

35 cm (40 kg track)

46 cm (40 kg track)

56 cm (40 kg track)

71 cm (70 kg track)

#### Load capacity

Carcase width up to 60 cm

35 kg

34 kg

33 kg

61 kg

Carcase width 61 - 120 cm

31 kg

30 kg

29 kg

59 kg

#### Pull-outs

Carcase depth

35 cm (40 kg track)

46 cm (40 kg track)

56 cm (70 kg track)

71 cm (70 kg track)

#### Load capacity

Carcase width up to 60 cm

33 kg

32 kg

56 kg

58 kg

Carcase width 61 - 120 cm

30 kg

29 kg

52 kg

51 kg

#### Corner units

Carousel shelves for UEK ...

Le-Mans half round swing trays

Half round swing trays (UEV / UEAV)

#### Load capacity

20 kg per tray

25 kg per tray

15 kg per tray

#### Pull-out larder units

Base units 15 cm wide (UAA)

Base units 15 cm wide (UAB / UAH)

Base units 30 cm wide (UVA)

Base units 30 cm wide (ULVCA)

Tall units (HV ...)

Tall units (HVC ...)

Tall units (HTC ...)

TANDEM solo

Tandem

TurnMotion

#### Load capacity

12 kg

10 kg

28 kg

28 kg

120 kg

120 kg

40 kg

16 kg per tray

4 kg / 10 kg per tray

20 kg per tray

#### Removable shelves

30 cm wide

40 cm wide

50 cm wide

60 cm wide

80 cm wide (post)

90 cm wide (post)

100 cm wide (post)

#### Load capacity

11 kg

11 kg

11 kg

11 kg

19 kg

19 kg

19 kg

#### Other units

Swing-out appliance platform (ULMS)

Pull- out tabletop (UZST)

Metal board (NSBM)

#### Load capacity

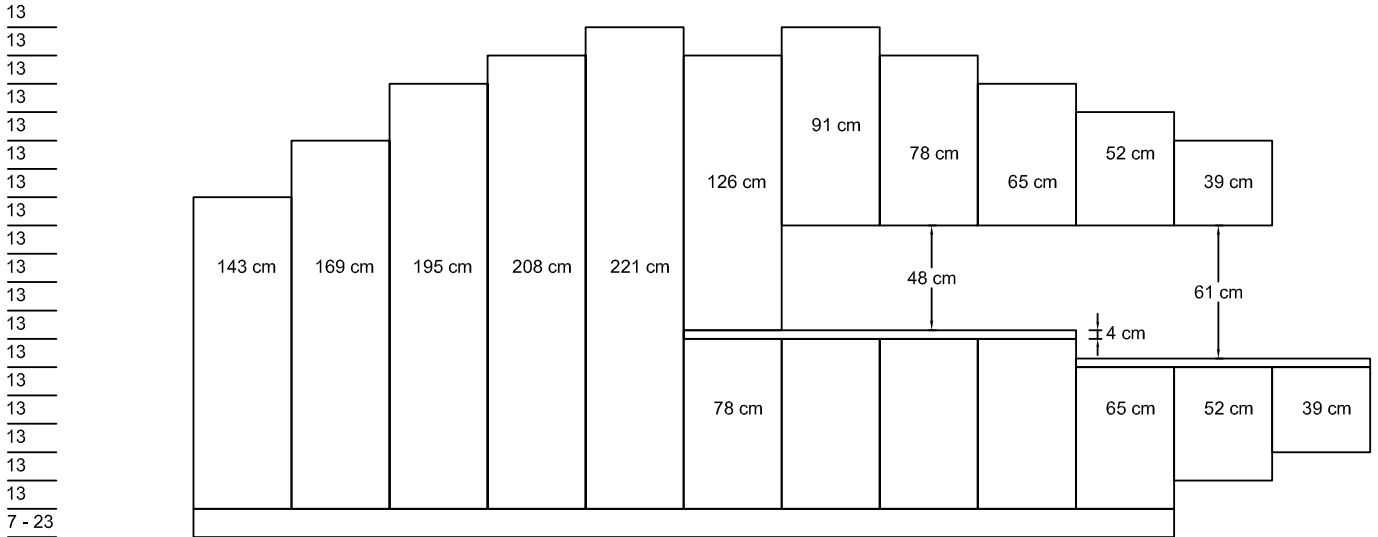
8 kg

25 kg

10 kg per tray

# Product information

## Carcase height



## Carcase depths

